

SOLAR'S MOST TRUSTED



REC TWINPEAK 2S 72 SERIES

PREMIUM SOLAR PANELS WITH SUPERIOR PERFORMANCE

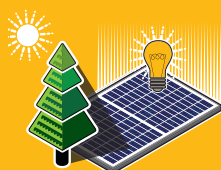
REC TwinPeak 2S 72 Series* solar panels feature an innovative design with the higher panel efficiency of polycrystalline cells, enabling customers to get the most out of the space used for the installation.

Combined with industry-leading product quality and the reliability of a strong and established European brand, REC TwinPeak 2S 72 panels are ideal for commercial rooftops worldwide.

*Product not available in Germany.



**REDUCES BALANCE OF
SYSTEM COSTS**



**IMPROVED PERFORMANCE
IN SHADED CONDITIONS**



**INDUSTRY-LEADING
LIGHTWEIGHT 72-CELL PANEL**



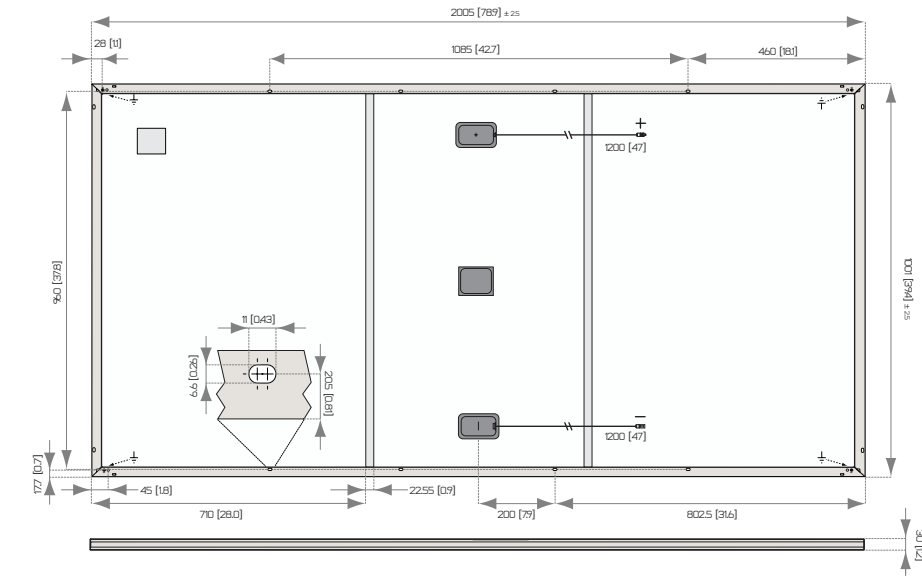
**100%
PID FREE**

REC TWINPEAK 2S 72 SERIES

17.7% EFFICIENCY
20 YEAR PRODUCT WARRANTY
25 YEAR LINEAR POWER OUTPUT WARRANTY

GENERAL DATA

Cell type: 144 half-cut multicrystalline PERC cells
 6 strings of 24 cells in series
Glass: 3.2 mm solar glass with anti-reflection surface treatment
Backsheet: Highly resistant polymeric construction
Frame: Anodized aluminum
Support bars: Anodized aluminum
Junction box: 3-part, 3 bypass diodes, IP67 rated in accordance with IEC 62790
Cable: 4 mm² solar cable, 1.2 m + 1.2 m in accordance with EN 50618
Connectors: Stäubli MC4-Evo 2 PV-KBT4-EVO-2/PV-KST4-EVO-2 (4 mm²) in accordance with IEC 62852, IP68 only when connected
 Tonglin TL-Cable01S-F (4 mm²) in accordance with IEC 62852, IP68 only when connected
Origin: Made in Singapore



Measurements in mm [in]

ELECTRICAL DATA @ STC

Product code*: RECxxxTP2S 72

Nominal Power - P_{MAX} (Wp)	330	335	340	345	350	355
Watt Class Sorting - (W)	-0/+5	-0/+5	-0/+5	-0/+5	-0/+5	-0/+5
Nominal Power Voltage - V_{MPP} (V)	38.1	38.3	38.5	38.7	38.9	39.1
Nominal Power Current - I_{MPP} (A)	8.67	8.75	8.84	8.92	9.00	9.09
Open Circuit Voltage - V_{OC} (V)	46.0	46.2	46.3	46.5	46.7	46.8
Short Circuit Current - I_{SC} (A)	9.44	9.52	9.58	9.64	9.72	9.78
Panel Efficiency (%)	16.5	16.7	16.9	17.2	17.4	17.7

Values at standard test conditions (STC: air mass AM1.5, irradiance 1000 W/m², temperature 25°C), based on a production spread with a tolerance of P_{MAX} , V_{OC} & I_{SC} $\pm 3\%$ within one watt class. At low irradiance of 200 W/m² at least 95% of the STC module efficiency will be achieved.
 *Where xxx indicates the nominal power class (P_{MAX}) at STC indicated above, and can be followed by the suffix XV for 1500 V rated modules.

ELECTRICAL DATA @ NMOT

Product code*: RECxxxTP2S 72

Nominal Power - P_{MAX} (Wp)	244	252	257	260	264	268
Nominal Power Voltage - V_{MPP} (V)	34.9	35.5	35.7	35.8	36.0	36.2
Nominal Power Current - I_{MPP} (A)	6.99	7.10	7.19	7.25	7.32	7.39
Open Circuit Voltage - V_{OC} (V)	42.3	42.8	42.9	43.1	43.2	43.3
Short Circuit Current - I_{SC} (A)	7.44	7.74	7.79	7.84	7.90	7.95

Nominal module operating temperature (NMOT: air mass AM1.5, irradiance 800 W/m², temperature 20°C, windspeed 1 m/s).

*Where xxx indicates the nominal power class (P_{MAX}) at STC indicated above, and can be followed by the suffix XV for 1500 V rated modules.

CERTIFICATIONS



IEC 61215, IEC 61730 & UL 1703; MCS 005, IS 14286; IEC 62804 (PID), IEC 62716 (Ammonia Resistance), IEC 61701 (Salt Mist level 6), UNI 8457/9174 (Class A), ISO 11925-2 (Class E), ISO 9001: 2015, ISO 14001: 2004, OHSAS 18001: 2007

takeaway take-e-way WEEE-compliant recycling scheme

WARRANTY

20 year product warranty
 25 year linear power output warranty

Max. performance degradation of 0.5% p.a. from 97.5% in year 1
 See warranty conditions for further details.

MAXIMUM RATINGS

Operational temperature:	-40 ... +85°C
Maximum system voltage:	1000 V / 1500 V
Design load (+): snow	367 kg/m ² (3600 Pa)*
Maximum test load (+):	550 kg/m ² (5400 Pa)*
Design load (-): wind	163 kg/m ² (1600 Pa)*
Maximum test load (-):	244 kg/m ² (2400 Pa)*
Max series fuse rating:	25 A
Max reverse current:	25 A

* Calculated using a safety factor of 1.5

* See installation manual for mounting instructions

TEMPERATURE RATINGS*

Nominal Module Operating Temperature:	44.6°C ($\pm 2^\circ$ C)
Temperature coefficient of P_{MAX} :	-0.36 %/°C
Temperature coefficient of V_{OC} :	-0.30 %/°C
Temperature coefficient of I_{SC} :	0.066 %/°C

*The temperature coefficients stated are linear values

MECHANICAL DATA

Dimensions:	2005 x 1001 x 30 mm
Area:	2.01 m ²
Weight:	22 kg

REC Group is an international pioneering solar energy company dedicated to empowering consumers with clean, affordable solar power in order to facilitate global energy transitions. Committed to quality and innovation, REC offers photovoltaic modules with leading high quality, backed by an exceptional low warranty claims rate of less than 100ppm. Founded in Norway in 1996, REC employs 2,000 people and has an annual solar panel capacity of 1.8 GW. With over 10 GW installed worldwide, REC is empowering more than 16 million people with clean solar energy. REC Group is a Bluestar Elkem company with headquarters in Norway, operational headquarters in Singapore, and regional bases in North America, Europe, and Asia-Pacific.

REC
 www.recgroup.com